

AvalineScriptRegular

This is an **OpenType/CFF** font with **415 characters**. It has **60 layout features**.

Characters

415

Glyphs

2075

Layout features

60

Languages

36

Filename

Avaline-Script_Regular.otf

Size

568 KB

Format

OpenType

Designed by

Kimmy Kirkwood

Manufactured by

Kimmy Design

Copyright

Copyright (c) 2015 by Kimmy Design. All rights reserved.

Version

1.000

License

END USER LICENSE AGREEMENT This copy of AVALINE (Font Family) ("the Software Product") and accompanying documentation is licensed and not sold. This Software Product is protected by copyright laws and treaties, as well as laws and treaties related to other forms of intellectual property. Kimmy Design or its subsidiaries, affiliates, and suppliers (collectively "KD") own intellectual property rights in the Software Product. The

Language support

36 languages: Afrikaans, Albanian, Basque, Bosnian, Catalan, Croatian, Czech, Danish, Dutch, English, Estonian, Faroese, Filipino, Finnish, French, Galician, German, Hungarian, Icelandic, Indonesian, Irish, Italian, Latvian, Lithuanian, Malay, Norwegian Bokmål, Polish, Portuguese, Romanian, Slovak, Slovenian, Spanish, Swahili, Swedish, Turkish, Zulu

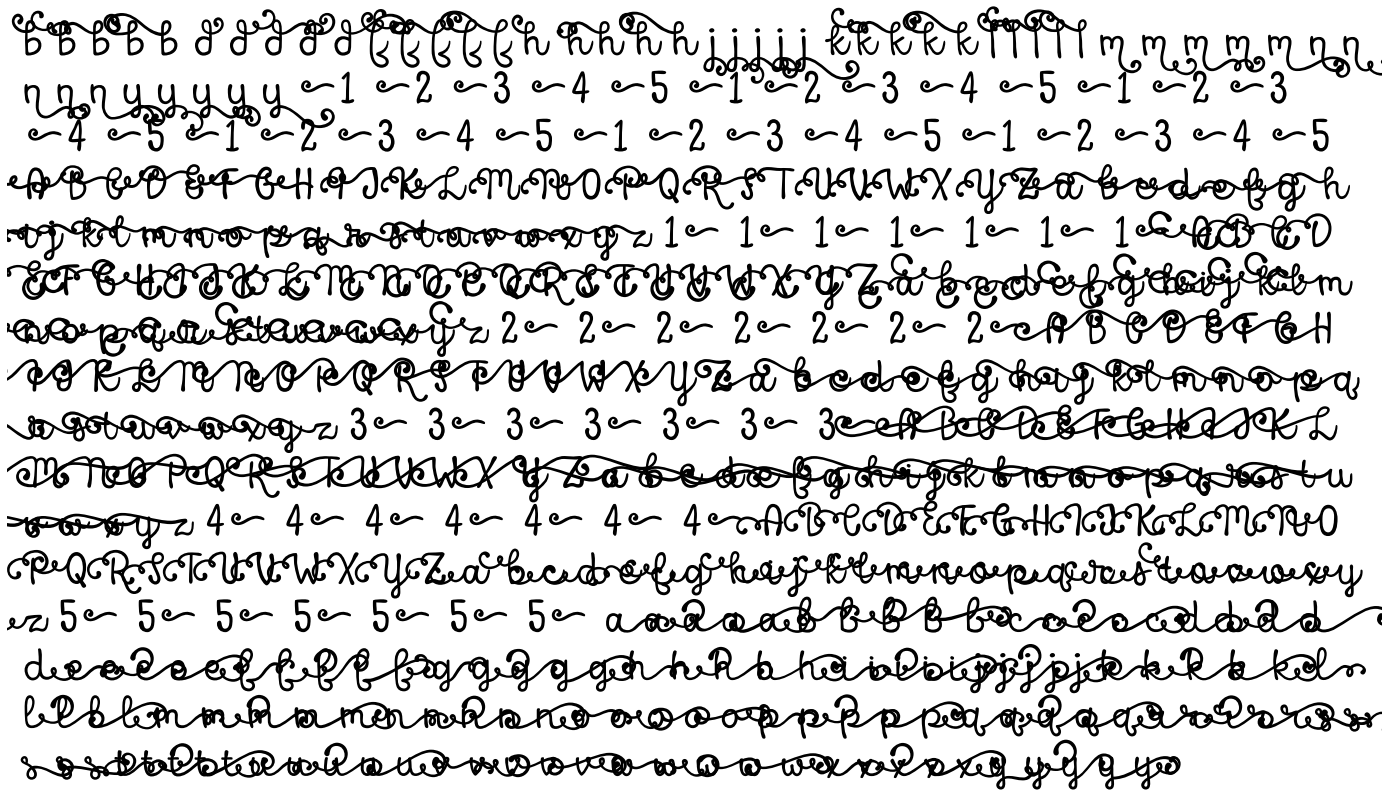
Layout features

calt cswh liga onum pnum salt smcp ss01 ss02 ss03 ss04 ss05 ss06 ss07
ss08 ss09 ss10 ss11 ss12 ss13 ss14 ss15 ss16 ss17 ss18 ss19 ss20 ss21
ss22 ss23 ss24 ss25 ss26 ss27 ss28 ss29 ss30 ss31 ss32 ss33 ss34 ss35
ss36 ss37 ss38 ss39 ss40 ss41 ss42 ss43 ss44 ss45 ss46 ss47 ss48 ss49
swsh titl tnum kern

These are the optional layout features. Some are turned on by default, but can be turned off. Other are turned off by default, but can be turned on. The HTML examples show how to turn each feature on using the [generated stylesheet](#).

swsh Swash

off by default Show



There are 991 substitutions for this feature, only showing the first 500.

There are 216 more glyphs we couldn't trace back to a character. These are probably substitutions of other substitutions.

cswh Contextual Swash

off by default Show

A B C D E F G H I J K L M N O P Q R S T U V W X Y Z

There are 11200 more glyphs we couldn't trace back to a character. These are probably substitutions of other substitutions.

salt Stylistic Alternates

off by default Show

A B C D E F G H I J K L M N O P Q R S T U V W X Y Z b d f h k l p

There are 11622 more glyphs we couldn't trace back to a character. These are probably substitutions of other substitutions.

ss01 Stylistic Sets

off by default

There are 283 glyphs we couldn't trace back to a character. These are probably substitutions of other substitutions.

ss02 Stylistic Sets

off by default Show

A B C D E F G H I J K L M N O P Q R S T U V W X Y Z a b c d e f g h i j k l
m n o p q r s t u v w x y z

There are 231 more glyphs we couldn't trace back to a character. These are probably substitutions of other substitutions.

ss03 Stylistic Sets

off by default Show

A B C D E F G H I J K L M N O P Q R S T U V W X Y Z a b c d e f g h i j k l
m n o p q r s t u v w x y z

There are 231 more glyphs we couldn't trace back to a character. These are probably substitutions of other substitutions.

ss04 Stylistic Sets

off by default Show

a b c d e f g h i j k l m n o p q r s t u v w x y z

There are 130 more glyphs we couldn't trace back to a character. These are probably substitutions of other substitutions.

ss05 Stylistic Sets

off by default Show

a b c d e f g h i j k l m n o p q r s t u v w x y z

There are 130 more glyphs we couldn't trace back to a character. These are probably substitutions of other substitutions.

ss06 Stylistic Sets

off by default Show

a b c d e f g h i j k l m n o p q r s t u v w x y z

There are 130 more glyphs we couldn't trace back to a character. These are probably substitutions of other substitutions.

ss07 Stylistic Sets

off by default Show

a b c d e f g h i j k l m n o p q r s t u v w x y z

There are 130 more glyphs we couldn't trace back to a character. These are probably substitutions of other substitutions.

ss08 Stylistic Sets

off by default Show

A B C D E F G H I J K L M N O P Q R S T U V W X Y Z b d f h k l p

There are 108 more glyphs we couldn't trace back to a character. These are probably substitutions of other substitutions.

ss09 Stylistic Sets

off by default Show

b d f h k l p

There are 56 more glyphs we couldn't trace back to a character. These are probably substitutions of other substitutions.

ss10 Stylistic Sets

off by default Show

b d f h k l p

There are 56 more glyphs we couldn't trace back to a character. These are probably substitutions of other substitutions.

ss11 Stylistic Sets

off by default Show

b d f h k l p

There are 56 more glyphs we couldn't trace back to a character. These are probably substitutions of other substitutions.

ss12 Stylistic Sets

off by default Show

b d f h k l p

There are 56 more glyphs we couldn't trace back to a character. These are probably substitutions of other substitutions.

ss13 Stylistic Sets

off by default Show

b d f h k l p

There are 56 more glyphs we couldn't trace back to a character. These are probably substitutions of other substitutions.

ss14 Stylistic Sets

off by default Show

ᄀ ᄁ ᄂ ᄃ ᄄ ᄅ ᄆ

There are 56 more glyphs we couldn't trace back to a character. These are probably substitutions of other substitutions.

ss15 Stylistic Sets

off by default Show

ᄀ ᄁ ᄂ ᄃ ᄄ ᄅ ᄆ ᄇ ᄈ ᄉ ᄊ ᄋ ᄌ ᄍ ᄎ ᄏ

There are 77 more glyphs we couldn't trace back to a character. These are probably substitutions of other substitutions.

ss16 Stylistic Sets

off by default Show

ᄀ ᄁ ᄂ ᄃ ᄄ ᄅ ᄆ ᄇ ᄈ ᄉ ᄊ ᄋ ᄌ ᄍ ᄎ ᄏ

There are 77 more glyphs we couldn't trace back to a character. These are probably substitutions of other substitutions.

ss17 Stylistic Sets

off by default Show

ᄀ ᄁ ᄂ ᄃ ᄄ ᄅ ᄆ ᄇ ᄈ ᄉ ᄊ ᄋ ᄌ ᄍ ᄎ ᄏ

There are 77 more glyphs we couldn't trace back to a character. These are probably substitutions of other substitutions.

ss18 Stylistic Sets

off by default Show

ᄀ ᄁ ᄂ ᄃ ᄄ ᄅ ᄆ ᄇ ᄈ ᄉ ᄊ ᄋ ᄌ ᄍ ᄎ ᄏ

There are 77 more glyphs we couldn't trace back to a character. These are probably substitutions of other substitutions.

ss19 Stylistic Sets

off by default Show

ᄀ ᄁ ᄂ ᄃ ᄄ ᄅ ᄆ ᄇ ᄈ ᄉ ᄊ ᄋ ᄌ ᄍ ᄎ ᄏ

There are 77 more glyphs we couldn't trace back to a character. These are probably substitutions of other substitutions.

ss20 Stylistic Sets

off by default Show

ᄀ ᄁ ᄂ ᄃ ᄄ ᄅ ᄆ ᄇ ᄈ ᄉ ᄊ ᄋ ᄌ ᄍ ᄎ ᄏ

There are 77 more glyphs we couldn't trace back to a character. These are probably substitutions of other substitutions.

0 1 2 3 4 5 6 7 8 9

There are 30 glyphs we couldn't trace back to a character. These are probably substitutions of other substitutions.

0 1 2 3 4 5 6 7 8 9

There are 10 more glyphs we couldn't trace back to a character. These are probably substitutions of other substitutions.

I Ł Ž ! \$ % & () 0 1 2 3 4 5 6 7 8 9 ? A B C D E F G H I J K L M N O P Q R S T U V W X Y Z [] ^ _ ` a b c d e f g h i j k l m n o p q r s t u v w x y z { | } ~ ¡ ¢ £ ¥ ¤ ¦ § ¨ © ª « ¬ ® ¯ ° ± ² ³ ´ µ ¶ · ¸ ¹ º » ¼ ½ ¾ ¿ À Á Â Ã Ä Å Æ Ç È É Ê Ë Ì Í Î Ï Ñ Ò Ó Ô Õ Ö Ø Ù Ú Û Ü Ý Þ ß à á â ã ä å æ ç è é ê ë ì í î ï ð ñ ò ó ô õ ö ø ù ú û ü ý þ ÿ

There are 2 more glyphs we couldn't trace back to a character. These are probably substitutions of other substitutions.

A B C D E F G H I J K L M N O P Q R S T U V W X Y Z A B C D E F G H I J K L M N O P Q R S T U V W X Y Z '

There are 219 more glyphs we couldn't trace back to a character. These are probably substitutions of other substitutions.

A B C D E F G H I J K L M N O P Q R S T U V W X Y Z a b c d e f g h i j k l m n o p q r s t u v w x y z A B C D E F G H I J K L M N O P Q R S T U V W X Y Z a b c d e f g h i j k l m n o p q r s t u v w x y z A B C D E F G H I J K L M N O P Q R S T U V W X Y Z a b c d e f g h i j k l m n o p q r s t u v w x y z A B C D E F G H I J K L M N O P Q R S T U V W X Y Z a b c d e f g h i j k l m n o p q r s t u v w x y z A B C D E F G H I J K L M N O P Q R S T U V W X Y Z a b c d e f g h i j k l m n o p q r s t u v w x y z

/i /j /k /l /m /n /o /p /q /r /s /t /u /v /w /x /y /z LA LB LC LD LE LF LG LH LI
LJ LK LL LM LN LO LP LQ LR LS LT LU LV LW LX LY LZ La Lb Lc Ld Le Lf Lg Lh Li
Lj Lk Ll Lm Ln Lo Lp Lq Lr Ls Lt Lu Lv Lw Lx Ly Lz IA IB IC ID IE IF
IG IH II IJ IK IL IM IN IO IP IQ IR IS IT IU IV IW IX IY IZ Ia Ib Ic Id Ie If Ig Ih Ii
Ij Ik Il Im In Io Ip Iq Ir Is It Iu Iv Iw Ix Iy Iz ŽA ŽB ŽC ŽD ŽE ŽF ŽG ŽH ŽI
ŽJ ŽK ŽL ŽM ŽN ŽO ŽP ŽQ ŽR ŽS ŽT ŽU ŽV ŽW ŽX ŽY ŽZ Ža Žb Žc Žd
Že Žf Žg Žh Ži Žj Žk Žl Žm Žn Žo Žp Žq Žr Žs Žt Žu Žv Žw Žx Žy
Žz žA žB žC žD žE žF žG žH žI žJ žK žL žM žN žO žP žQ žR žS žT žU žV
žW žX žY žZ ža žb žc žd že žf žg žh ži žj žk žl žm žn žo žp žq žr žs žt žu žv žw žx žy žz

There are 38325 substitutions for this feature, only showing the first 500.

There are 90145 more glyphs we couldn't trace back to a character. These are probably substitutions of other substitutions.

liga Standard Ligatures

on by default Show

ll Thu flz lru ir thv tt

There is one more glyph we couldn't trace back to a character. These are probably substitutions of other substitutions.

ss21 Stylistic Sets

off by default Show

A B C D E F G H I J K L M N O P Q R S T U V W X Y Z a b c d e f g h i
j k l m n o p q r s t u v w x y z

There are 364 more glyphs we couldn't trace back to a character. These are probably substitutions of other substitutions.

ss22 Stylistic Sets

off by default Show

A B C D E F G H I J K L M N O P Q R S T U V W X Y Z a b c d e f g
h i j k l m n o p q r s t u v w x y z

There are 364 more glyphs we couldn't trace back to a character. These are probably substitutions of other substitutions.

ss23 Stylistic Sets

off by default Show

A B C D E F G H I J K L M N O P Q R S T U V W X Y Z a b c d e f g
h i j k l m n o p q r s t u v w x y z

There are 364 more glyphs we couldn't trace back to a character. These are probably substitutions of other substitutions.

ss24 Stylistic Sets

off by default Show

A B C D E F G H I J K L M N O P Q R S T U V W X Y Z a b c d e f g
h i j k l m n o p q r s t u v w x y z

There are 364 more glyphs we couldn't trace back to a character. These are probably substitutions of other substitutions.

ss25 Stylistic Sets

off by default Show

A B C D E F G H I J K L M N O P Q R S T U V W X Y Z a b c d e f g
h i j k l m n o p q r s t u v w x y z

There are 364 more glyphs we couldn't trace back to a character. These are probably substitutions of other substitutions.

ss26 Stylistic Sets

off by default Show

a b c d e f g h i j k l m n o p q r s t u v w x y z

There are 286 more glyphs we couldn't trace back to a character. These are probably substitutions of other substitutions.

ss27 Stylistic Sets

off by default Show

a b c d e f g h i j k l m n o p q r s t u v w x y z

There are 286 more glyphs we couldn't trace back to a character. These are probably substitutions of other substitutions.

ss28 Stylistic Sets

off by default Show

a b c d e f g h i j k l m n o p q r s t u v w x y z

There are 286 more glyphs we couldn't trace back to a character. These are probably substitutions of other substitutions.

ss29 Stylistic Sets

off by default Show

a b c d e f g h i j k l m n o p q r s t u v w x y z

There are 286 more glyphs we couldn't trace back to a character. These are probably substitutions of other substitutions.

ss30 Stylistic Sets

off by default Show

a b c d e f g h i j k l m n o p q r s t u v w x y z

There are 286 more glyphs we couldn't trace back to a character. These are probably substitutions of other substitutions.

ss31 Stylistic Sets

off by default Show

a b c d e f g h i j k l m n o p q r s t u v w x y z

There are 286 more glyphs we couldn't trace back to a character. These are probably substitutions of other substitutions.

ss32 Stylistic Sets

off by default Show

B d f h k l

There are 42 more glyphs we couldn't trace back to a character. These are probably substitutions of other substitutions.

ss33 Stylistic Sets

off by default Show

B d f h k l

There are 42 more glyphs we couldn't trace back to a character. These are probably substitutions of other substitutions.

ss34 Stylistic Sets

off by default Show

B d f h k l

There are 42 more glyphs we couldn't trace back to a character. These are probably substitutions of other substitutions.

ss35 Stylistic Sets

off by default Show

B d f h k l

There are 42 more glyphs we couldn't trace back to a character. These are probably substitutions of other substitutions.

ss36 Stylistic Sets

off by default Show

Ḃ Ḅ ḟ ḥ ḵ Ḷ

There are 42 more glyphs we couldn't trace back to a character. These are probably substitutions of other substitutions.

ss37 Stylistic Sets

off by default Show

Ḃ Ḅ ḟ ḥ ḵ Ḷ

There are 42 more glyphs we couldn't trace back to a character. These are probably substitutions of other substitutions.

ss38 Stylistic Sets

off by default Show

Ḃ Ḅ ḟ ḥ ḵ Ḷ

There are 48 more glyphs we couldn't trace back to a character. These are probably substitutions of other substitutions.

ss39 Stylistic Sets

off by default Show

Ḃ Ḅ ḟ ḥ ḵ Ḷ

There are 48 more glyphs we couldn't trace back to a character. These are probably substitutions of other substitutions.

ss40 Stylistic Sets

off by default Show

Ḃ Ḅ ḟ ḥ ḵ Ḷ

There are 48 more glyphs we couldn't trace back to a character. These are probably substitutions of other substitutions.

ss41 Stylistic Sets

off by default Show

Ḃ Ḅ ḟ ḥ ḵ Ḷ

There are 48 more glyphs we couldn't trace back to a character. These are probably substitutions of other substitutions.

ss42 Stylistic Sets

off by default Show

Ḃ Ḅ ḟ ḥ ḵ Ḷ

There are 48 more glyphs we couldn't trace back to a character. These are probably substitutions of other substitutions.

Б ɔ ꝥ ʁ ƙ ʔ

There are 48 more glyphs we couldn't trace back to a character. These are probably substitutions of other substitutions.

Б ɔ ꝥ ʁ ƙ ʔ

There are 48 more glyphs we couldn't trace back to a character. These are probably substitutions of other substitutions.

Б ɔ ꝥ ʁ ƙ ʔ

There are 48 more glyphs we couldn't trace back to a character. These are probably substitutions of other substitutions.

Б ɔ ꝥ ʁ ƙ ʔ

There are 48 more glyphs we couldn't trace back to a character. These are probably substitutions of other substitutions.

Б ɔ ꝥ ʁ ƙ ʔ

There are 48 more glyphs we couldn't trace back to a character. These are probably substitutions of other substitutions.

Б ɔ ꝥ ʁ ƙ ʔ

There are 48 more glyphs we couldn't trace back to a character. These are probably substitutions of other substitutions.

⋈ A B C D E F G H I J K L M N O P Q R S T U V W X Y Z a b c d e ꝥ g
 ʁ i j k ʔ m n o p q r s t u v w x y z

There are 364 more glyphs we couldn't trace back to a character. These are probably substitutions of other substitutions.

kern Kerning

on by default Show

The five boxing wizards jump quickly! 0123456789?

There are 482 more glyphs we couldn't trace back to a character. These are probably substitutions of other substitutions.